

EXDXF-Pro2



Plug-in for Adobe Illustrator

System Requirements:

- Adobe Illustrator 8.0 / 9.0 / 10.0 / CS / CS2
- Macintosh OS 9.1 / OS X 10.1~
- Windows OS 98 / Me / 2000 / XP

In some cases there may be a malfunctioning of BPT-Pro2 when used in conjunction with, or at the same time as other companies Adobe Illustrator Plug-ins, and as such the program may not work properly. Please bear with us.

► <http://www.baby-universe.co.jp/plugin/eng>

Terms and conditions

Before using EXDXF-Pro2, please read through the each terms and conditions written below. By using the EXDXF-Pro2 Package we judge that you have read and understood the following information.

1. License

Basically one license for EXDXF-Pro2 qualifies you to use one application, which means that one license allows you to install the software on one machine. If you want to use the software license for other purposes, it is illegal and you could be asked for compensation.

2. Conditions of use

You cannot use the function of DXF file conversion for the purpose of making a profit as part of the service of your business. For other uses of the product, if the act is judged as making a profit from the function, we can stop you from using the license of the product.

3. Warranty of use

It is not possible for us to insure against any accidents that could happen when users use BPT-Pro2, and as such, we regard your use of the software as agreement that there have been no problems, unless you stop using the software while still using the demonstration version.

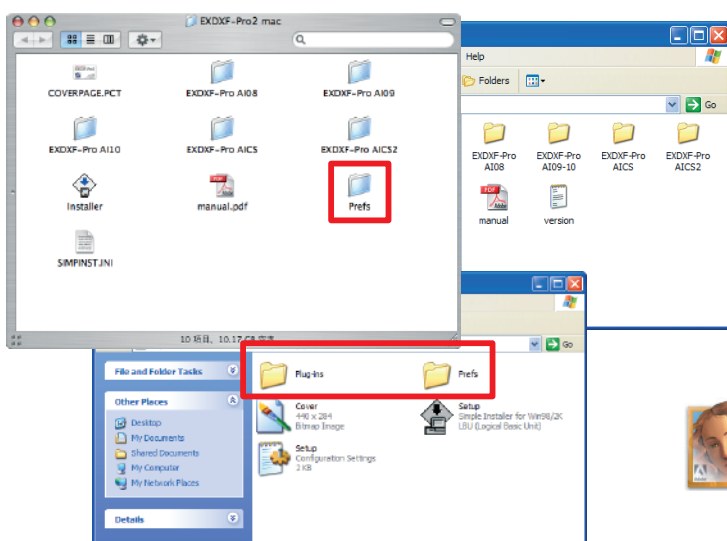
Installation

■ Close Adobe Illustrator before you start installation

When opening EXDXF-Pro2, you see a dialog box appear as shown. You will find 4 versions of the EXDXF-Pro2 folders.

EXDXF-Pro2 AI08, EXDXF-Pro2 AI09-10, EXDXF-Pro2 AICS and EXDXF-Pro2 AICS2 are shown in the dialog box. The numbers written at the end of EXDXF-Pro2 indicate different versions of Adobe Illustrator in such that AI08 means Adobe Illustrator version 8.0. First of all, choose the folder that corresponds with the Adobe Illustrator you are using on your OS.

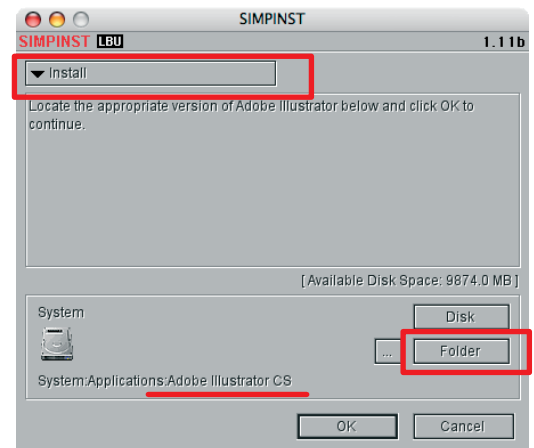
Start the Setup.exe ("Setup.exe for Windows OS, "Installer for Mac OS) by double clicking the icon, and choosing the OK button to complete installation. The installer automatically searches for the compatible version of Adobe Illustrator in your system. Where it is not found, and different or several versions of Adobe Illustrator are in your system, please use the disk change button or install directory to search for the compatible version. If the compatible version of Adobe Illustrator is still not found, press and drag the EXDXF-Pro2 Plug-in file, and drop it directly in the Adobe Illustrator plug-in folder in your system, and also drag the "Prefs" folder, and drop in the first level of the Adobe Illustrator folder, then install. It may take time depending on the environment of your computer.



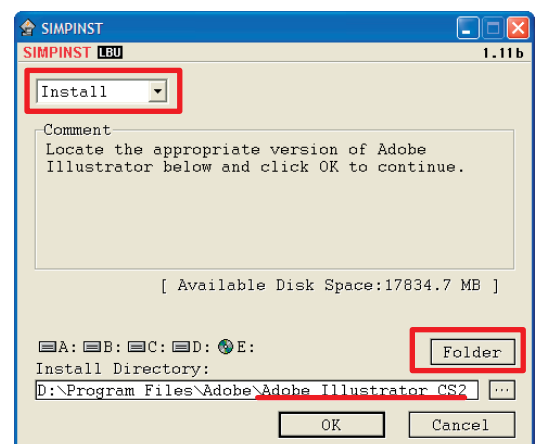
Macintosh OS



Windows OS



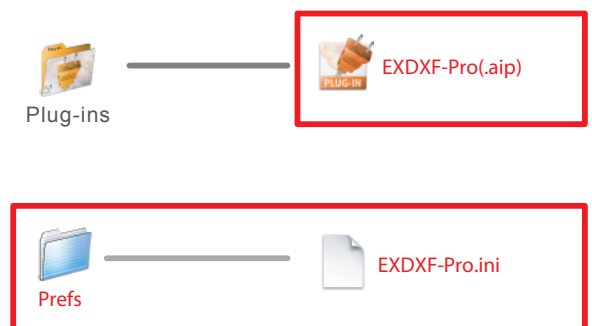
Macintosh OS installer dialog box



Windows OS installer dialog box

■ For Macintosh User

The Plug-in file, EXDXF-Pro(.aip), can be found in the folder for each version of illustrator.



The data selected by a are to be installed.

How to personalize

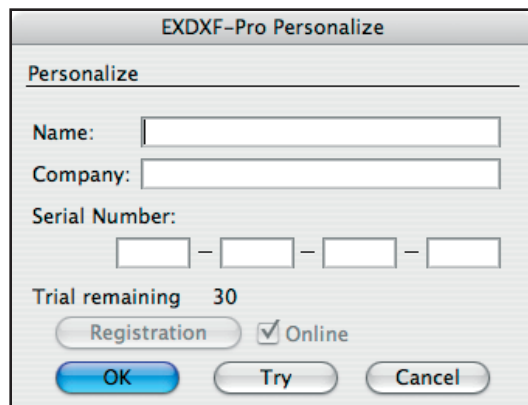
When you start EXDXF-Pro2, a dialog box as shown on the right, appears. Please enter your name, organization, such as company or school name and ID (activation code) to complete the personalization.

■ About demonstration version

If you want to use the software as a demonstration version, please press the “Trial button” to start the demonstration version of the software. The trial can be used a maximum of 30 times.

EXDXF-Pro2 Personalize dialog box appears when files are to be exported as DXF files or imported as DXF files to Adobe Illustrator. In this way, the dialog box as shown will not be seen when Adobe Illustrator is normally started.

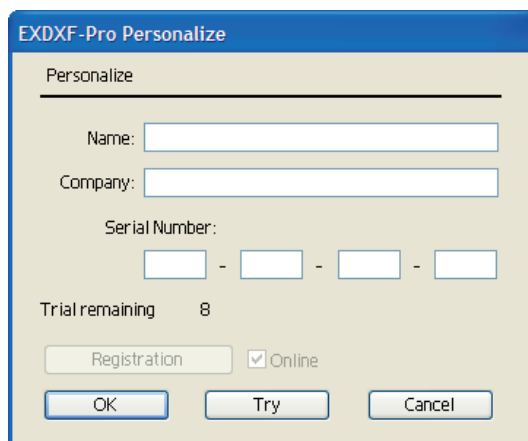
If you want to purchase the software as a regular version, please visit Baby Universe shopping page to buy online. Please follow the procedure in the shopping site. After we verify your purchase for the products with a credit card certified system, we will send an email with the subject “Confirmation of order”, which includes your “ID (activation code) and Serial number”.



The dialog box is titled "EXDXF-Pro Personalize". It contains the following fields and controls:

- Personalize** (Section Header)
- Name:** [Text Input Field]
- Company:** [Text Input Field]
- Serial Number:** [Four separate input boxes separated by hyphens]
- Trial remaining** 30
- Registration** (Button)
- ☒ **Online** (Checkbox)
- OK** (Button)
- Try** (Button)
- Cancel** (Button)

* Personalize dialog box



The dialog box is titled "EXDXF-Pro Personalize". It contains the following fields and controls:

- Personalize** (Section Header)
- Name:** [Text Input Field]
- Company:** [Text Input Field]
- Serial Number:** [Four separate input boxes separated by hyphens]
- Trial remaining** 8
- Registration** (Button)
- ☒ **Online** (Checkbox)
- OK** (Button)
- Try** (Button)
- Cancel** (Button)

DXF EXPORT

How to save a file:

There are 2 ways to export DXF files via EXDXF-Pro2. The first one is to choose the Save or Save as command from the File menu of Adobe Illustrator. The second one is to choose the Export command from the File menu. From the Format pop-up menu, choose Drawing Interchange (DXF). With Append File Extension checked, the .dxf extension will be automatically added to the file name. Clicking the Save or Export button opens the DXF Type dialog box as shown, which allows you to choose the required options.

■ DXF Export Options

The DXF Type dialog box presents several options when saving files from Illustrator.

Use layer name

When checked, the DXF file will retain the Illustrator layer name.

Smoothing (Arc)

This option retains Bezier curves (smooth curves) created in Illustrator upon conversion.

Line Optimization

Depending upon the optimization of the original path, Illustrator's Bezier curves will be optimized, resulting in fewer anchor points and simpler paths.

Use circle (No line width)

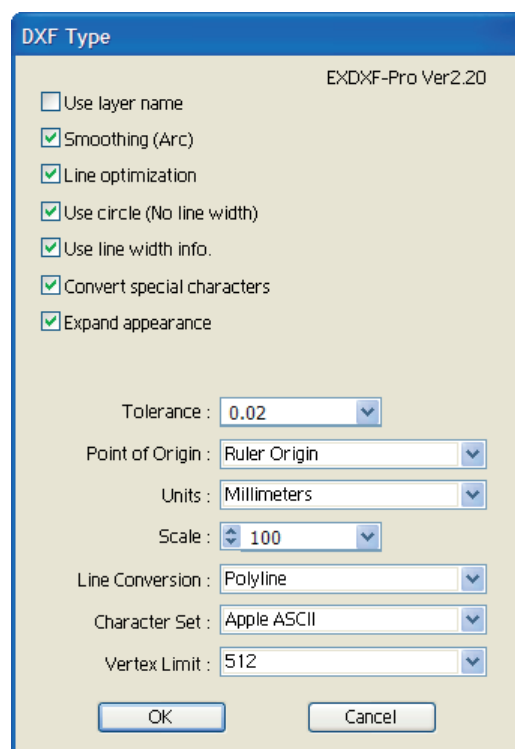
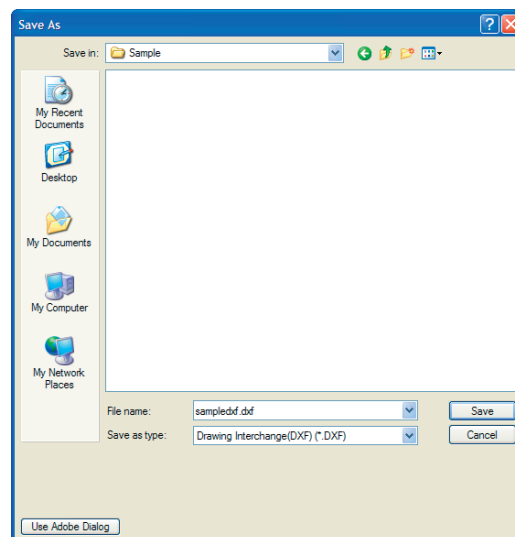
When checked, perfect circular objects can be maintained upon conversion without exporting the line width information.

Use line width info

When checked polyline width information is exported. However, the line width of regular lines and paths is not exported.

Convert special characters

The characters % ø ? will be maintained when not checked. This option works in conjunction with the comparable command in the DXF import options.



■ DXF Export Options

Expand appearance

When there are some effects added on an object, and it is shown in the Adobe Illustrator appearance palette, the object will be expanded and divided into plural vector objects, then exported as a DXF file automatically.

Tolerance

The tolerance of the exported document can be maintained from 0.01 points to 1.0 points.

Point of Origin

The exported document can maintain Illustrator's point-of-origin for the document, or you can specify the appropriate point. By default, Illustrator uses the lower-left corner of the document as the 0.0 point.

Units

The document can be exported using either inches or millimeters as the unit of measure.

Scale

The DXF file can be saved at various percentages of the original's size. The drop-down menu offers choices from 20% to 500%.

Line Conversion

The Line Conversion options are Polyline, Polyline and Arc, and Line and Arc. Select the appropriate option, depending upon the CAD software you will be using:

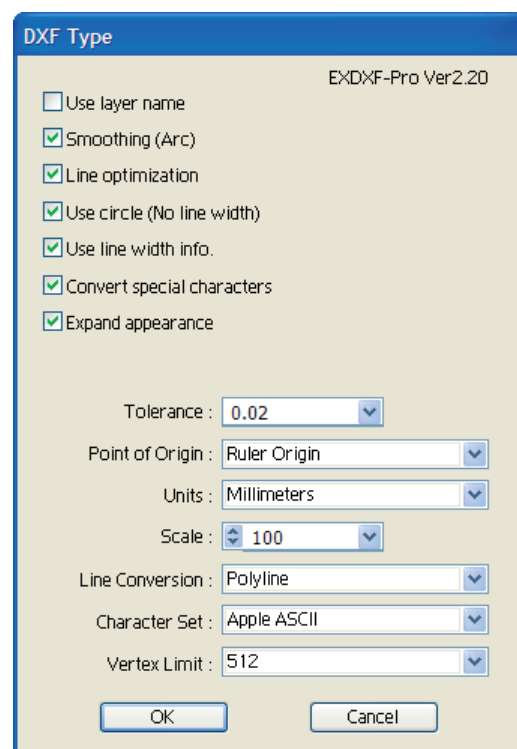
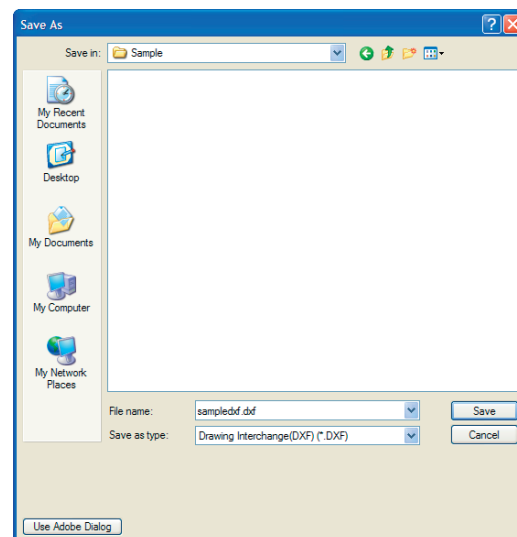
- **Polyline** – For general CAD software use. It is compatible with most CAD programs.
- **Polyline & Arc** – It offers compatibility with different DXF formats and curves with no rough edges.
- **Line & Arc** – For CAD software that does not utilize polylines.

Character Set

The character sets offered are ASCII for either Apple or Microsoft.

Vertex Limit

The number of vertices in a Polyline, the default is 512 points. The more points added can result in drawing a accurate line, and it is also adjustable depending on the result.



DXF IMPORT

EXDXF-Pro2 allows you to bring DXF files into Illustrator by means of the menu commands File> Open or File> Place. When Drawing Interchange Format (DXF) is selected as the file format, only .dxf files will appear in the window. To import a file, it must have the .dxf extension as part of the file name. Select a .dxf file and click Open or Place. You will be asked to select between EXDXF-Pro's Drawing Interchange (DXF) format and Illustrator's AutoCAD Interchange File format. Select EXDXF-Pro's format (Drawing Interchange).

*On Illustrator8.0, you can import a .dxf file using the menu commands, File> Open or File> Place. On Illustrator9.0, it is recommended to bring a .dxf file by means of File> Open. Opening a file through File> Place might cause some imprecision in your file.

■ DXF import Options:

When opening or placing a .dxf file with EXDXF-Pro2, you have a variety of options from which to choose:

Approximate Bezier

When this option is checked, the imported document will convert splines to approximated Bezier curves. When unchecked, corners and angles will have priority.

Arrange MTEXT to Area

This option allows MTEXT within a rectangular object to maintain line and paragraph breaks. When this option is not selected, text will be treated as point text and will not "wrap" within a container.

Convert special characters

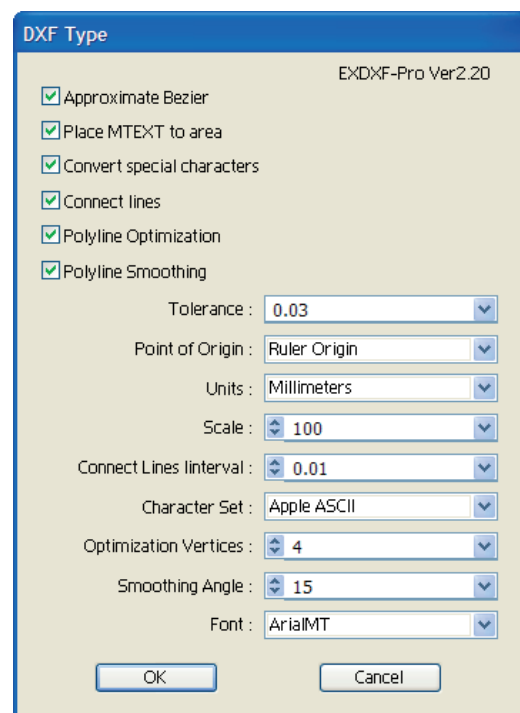
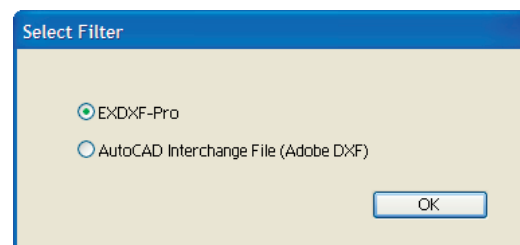
The special characters of (%), (ø), (±) etc. are changed when checked. By un-checking the field, special characters are not changed.

Connect lines

When converting from Splines to Bezier curves, the nearest lines can be connected.

Polyline Optimization

This pop-up menu allows you to determine the point of origin for the document.



■ DXF Import Options

Polyline Smoothing

This option retains Bezier curves (smooth curves) created in Illustrator upon conversion.

Tolerance

The tolerance of the exported document can be maintained from 0.01 points to 1.0 points.

Point of Origin

This pop-up menu allows you to determine the point of origin for the document.

Units

Both inches and millimeters are available.

Scale

The pop-up menu gives you the option of opening the .dxf file at a variety of sizes from 20% to 500%.

Connect Lines Interval

When the Connect Lines option is selected, this determines the maximum distance between lines that will be connected.

Character Set

You have the option of opening the file with Apple or Microsoft ASCII.

Optimization Vertices

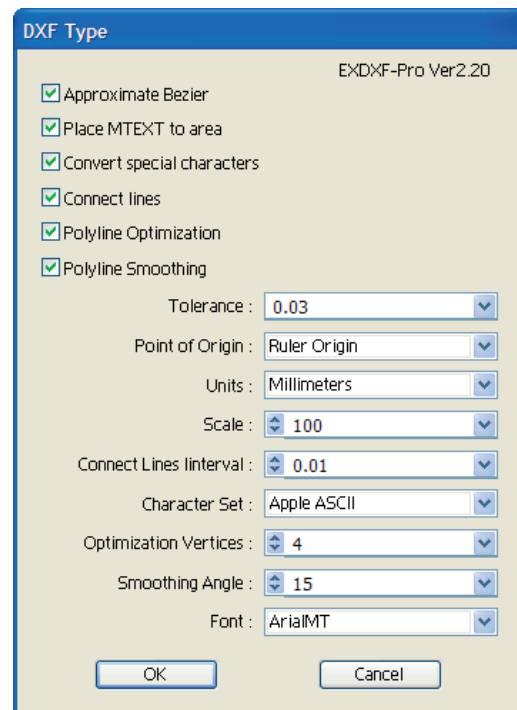
When Polyline has more than the designated number of vertices, unnecessary vertices will be omitted by smoothing technology.

Smoothing Angle

When the selected angle is small and the degree of anchor point edge created by paths is less than the selected angle, the angle of the anchor point will be sharpened but not smoothened. It is used when line smoothening is applied.

Font

Particular fonts to be used in the document can be specified by selecting the type face.



For further information about EXDXF-Pro2

- Please send your request by email or fax
Make sure to attach your ID and serial number of the product.

BABY UNIVERSE Inc.

FAX: +81 466 55 3001

Email: info_eng@baby-universe.co.jp

- Visit us to check the latest information on EXDXF-Pro2

<http://www.baby-universe.co.jp/plug-in/eng/>